

Chapter 3 Practice Test Trigonometry

1. a) $\angle A = 48^\circ$
 $BC = 20$
 $AC = 26.9$

b) $\angle D = 54.2^\circ$
 $\angle E = 35.8^\circ$
 $DF = 21.7$

2. $X = 4.9$

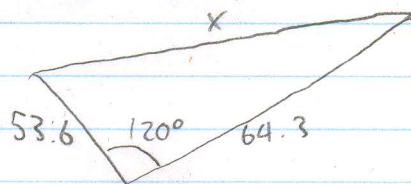
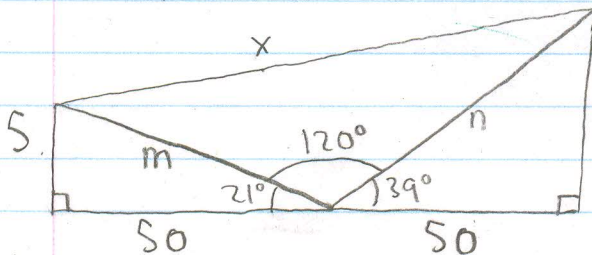
3. a) No triangle

b) 2 Triangles; $\angle B = 46.3^\circ$ or $\angle B = 133.7^\circ$ c) No triangle
 $\angle C = 93.7^\circ$ $\angle C = 6.3^\circ$
 $AB = 24.8$ $AB = 2.7$

d) 1 triangle; $\angle B = 36.7^\circ$
 $\angle C = 98.3^\circ$
 $\angle A = 18.2^\circ$

4. a) $\angle A = 46^\circ$
 $\angle B = 69^\circ$
 $F = 6.3$

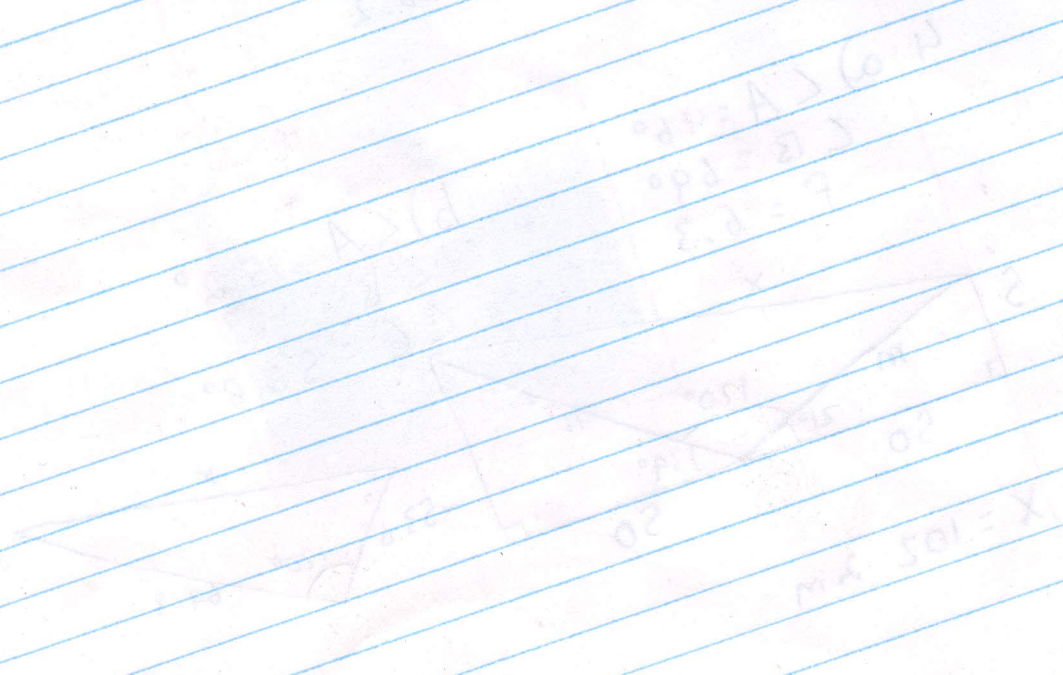
b) $\angle A = 75.2^\circ$
 $\angle B = 48^\circ$
 $\angle C = 56.8^\circ$



$X = 102.2 \text{ m}$

$$\angle B = 106^\circ$$

A



$$m\angle X = 105^\circ$$